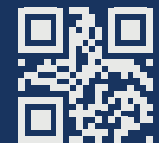




DENTAL CATALOG

XENOBONE[®]
Collagen Bone Graft Matrix

COLL-OS[®]
Collagen Based Dural Craft



www.desu.tr

ABOUT US

DESU is a pioneering medical research and development company established in 2007, headquartered in Ankara, Turkey. Our mission is to advance healthcare technologies by developing innovative solutions, with a particular focus on neurosurgery and biomaterials.

Our headquarters are strategically positioned in a vibrant academic ecosystem, featuring highly regulated and meticulously detailed facilities. This environment fosters seamless collaboration between research and practical application, enabling groundbreaking advancements. Our facilities feature state-of-the-art cleanroom production environments, including 10,000-class and 1,000-class cleanrooms, designed to meet the stringent standards required for producing premium-quality medical devices and materials.

FROM RESEARCH TO REALITY.

Innovation begins with curiosity—but its true impact is realized when groundbreaking research translates into real-world solutions. At **DESU**, we transform scientific advancements into tangible medical breakthroughs, bridging the gap between discovery and application.

Every product we create is the result of meticulous research, state-of-the-art technology, and an unwavering commitment to excellence. By integrating cutting-edge science with precision engineering, we ensure superior quality and performance in every solution we deliver.

With a relentless focus on progress, we don't just adapt to the future of healthcare—we shape it. By turning visionary research into reality, **DESU** is redefining what's possible in modern medicine and improving lives worldwide.

www.desu.tr

WHY CHOOSE US?

Our Approach

At **DESU**, we focus on understanding the precise needs of healthcare professionals and patients. Through cutting-edge innovation and scientific rigor, we develop solutions that meet the highest medical standards.

We Understand Your Needs

At **DESU**, we carefully assess the unique challenges in healthcare to offer the most effective, evidence-based solutions. Our team is committed to addressing medical needs with precision and expertise.

Our Quality Approach

At **DESU**, we uphold the highest standards of quality in every stage of our process. With a commitment to continuous improvement and compliance with global medical regulations, we ensure safe and effective healthcare solutions.



XENOBONE® Bovine-Derived Graft: The Ultimate Bone Graft Solution for Dental Excellence

XENOBONE® is a high-performance, bioresorbable bone graft designed to support superior bone regeneration. Crafted from **Ultra-Pure Type-I Bovine Collagen**, it combines osteoconductive and osteoinductive properties to set a new standard in dental grafting.

Why XENOBONE®?

Unmatched Composition:

Made from **Ultra-Pure Type-I Bovine Collagen** for optimal bone regeneration and osteoblast support.

Innovative Microporous Structure:

Ensures stability and seamless integration with natural bone.

Osteoconductive & Osteoinductive:

Dual properties accelerate bone healing and regeneration.

Sterile & Safe:

Individually sterilized vials ensure patient safety and minimize contamination risk.

Convenient & Cost-Effective Packaging:

Available in 1cc, 2cc, 5cc, and 10cc sizes, with flexible, budget-friendly 5cc packs offering excellent value.

XENOBONE®

Collagen Bone Graft Matrix



Elevate Your Practice with XENOBONE®

XENOBONE® delivers consistent, reliable results across various dental procedures, offering both value and superior performance.

Available in 1cc, 2cc, 5cc, and 10cc sizes—check the table for specific volume options.

www.desu.tr | www.xenobone.com

XENOBONE®: The Ultimate Choice for Dental Bone Regeneration.

Product Code	Content
CLS12525	Collagen-Based Dural Graft 1.25x2.5 cm
CLS152	Collagen-Based Dural Graft 1.5x2 cm
CLS23	Collagen-Based Dural Graft 2x3 cm
CLS2525	Collagen-Based Dural Graft 2.5x2.5 cm
XBN-0715W-1CC	Collagen-Based Animal-Derived Bone Graft 0.7 - 1.5 mm, 1 cc Granule
XBN-0715W-2CC	Collagen-Based Animal-Derived Bone Graft 0.7 - 1.5 mm, 2 cc Granule
XBN-0715W-5CC	Collagen-Based Animal-Derived Bone Graft 0.7 - 1.5 mm, 5 cc Granule
XBN-0715W-10CC	Collagen-Based Animal-Derived Bone Graft 0.7 - 1.5 mm, 10 cc Granule
XBN-23W-1CC	Collagen-Based Animal-Derived Bone Graft 2-3 mm, 1 cc Granule
XBN-23W-2CC	Collagen-Based Animal-Derived Bone Graft 2-3 mm, 2 cc Granule
XBN-23W-5CC	Collagen-Based Animal-Derived Bone Graft 2-3 mm, 5 cc Granule
XBN-23W-10CC	Collagen-Based Animal-Derived Bone Graft 2-3 mm, 10 cc Granule
XBN-45W-1CC	Collagen-Based Animal-Derived Bone Graft 4-5 mm, 1 cc Granule
XBN-45W-2CC	Collagen-Based Animal-Derived Bone Graft 4-5 mm, 2 cc Granule
XBN-45W-5CC	Collagen-Based Animal-Derived Bone Graft 4-5 mm, 5 cc Granule
XBN-45W-10CC	Collagen-Based Animal-Derived Bone Graft 4-5 mm, 10 cc Granule
XBN-67W-1CC	Collagen-Based Animal-Derived Bone Graft 6-7 mm, 1 cc Granule
XBN-67W-2CC	Collagen-Based Animal-Derived Bone Graft 6-7 mm, 2 cc Granule
XBN-67W-5CC	Collagen-Based Animal-Derived Bone Graft 6-7 mm, 5 cc Granule
XBN-67W-10CC	Collagen-Based Animal-Derived Bone Graft 6-7 mm, 10 cc Granule

COLL-OS[®]

Collagen Based Dural Craft



Coll-os: The Future of Dental Regeneration

Enhance patient outcomes and elevate your practice with Coll-os your trusted partner in dental tissue regeneration.

Choose Coll-os: **The Ultimate Partner in Dental Regeneration.**

Applications

- Periodontal Regeneration
- Socket Preservation
- Gingival Recession Treatment
- Bone Regeneration

Bioresorbable Excellence

Naturally integrates without leaving residual material.

Suture-Free Convenience

Can be used with or without sutures for flexibility.

Coll-os: The Ultimate Solution for Dental Tissue Regeneration

Coll-os Collagen Based Graft offers an advanced, highly effective solution for dental tissue regeneration. Made from over 95% pure Type-1 bovine collagen, it mimics the natural extracellular matrix, ensuring seamless integration and superior healing.

Why Coll-os?

Superior Biocompatibility

High-purity collagen minimizes risks and enhances tissue integration.

Enhanced Regeneration

Accelerates healing, supporting periodontal, socket, and gingival tissue restoration.

Versatile Application

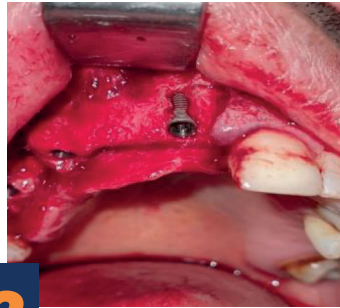
Dual-sided design adapts easily to various dental procedures.

Clinical Cases

1. Case - Placement of an implant in the bone defect area after tooth extraction and grafting around the implant.



1



2



3



4



Before the implant



6 months later

2. Case - Sinus Prolapse in the Upper Left Jaw - Closed Sinus Lift Graft and Implant Application



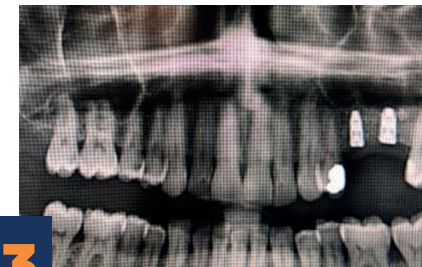
1

Initial: 3mm crestal bone



2

Placement of an 8.5mm implant using the closed sinus lift technique



3

After 6 months: 8.5mm crestal bone (new bone formation of 5.5mm in length)

3. Case



Impacted tooth in the upper right jaw with extraction indication



Placement of graft and implant after the procedure

3. Case

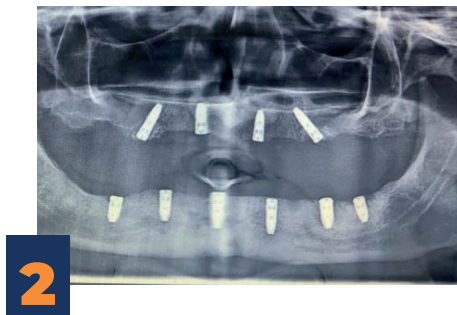
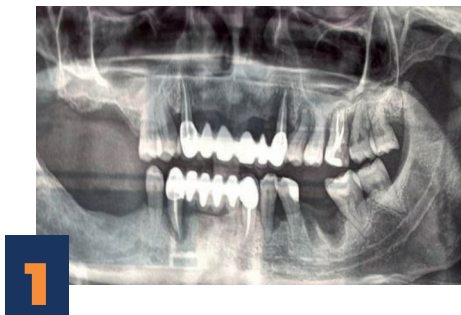


Sinus prolapse and infected area due to edentulism in the upper right jaw



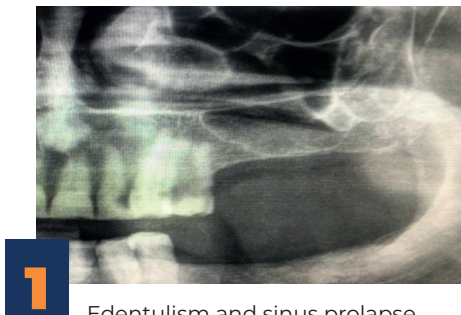
Open sinus lift and graft application followed by the placement of an 11.5mm implant, with a 3-month post-procedure image

5. Case - Large bone defects in the upper and lower jaw - Graft and implant application

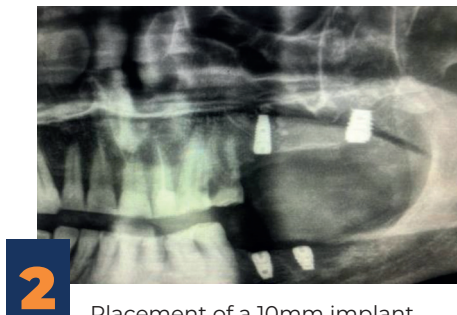


New bone formation and osseointegrated implants after 6 months.

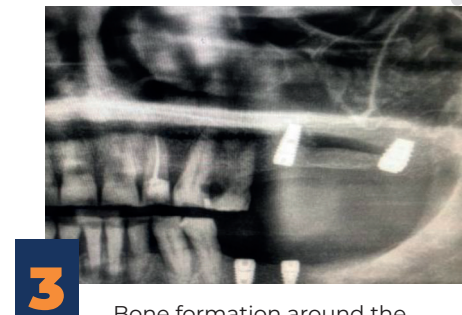
6. Case



Edentulism and sinus prolapse in the upper left jaw



Placement of a 10mm implant with a closed sinus lift (graft materials are observed around the implant)



Bone formation around the implant after 6 months

SHAPING THE FUTURE OF MEDICAL SOLUTIONS.



XENOBONE[®]
Collagen Bone Graft Matrix

COLL-OS[®]
Collagen Based Dural Craft

www.desu.tr



🏠 Üniversiteler Mah. 1596. Sok., Hacettepe Teknokent
Safir Bina E Blok Z02-03, 06800 Çankaya/Ankara

☎ +90 **312 299 25 63**

🌐 www.xenobone.com

🌐 www.desu.tr

