

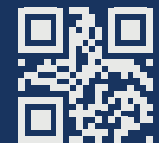


# DENTAL CATALOG

---

**XENOBONE<sup>®</sup>**  
Collagen Bone Graft Matrix

**COLL-OS<sup>®</sup>**  
Collagen Barrier Membrane



[www.desu.tr](http://www.desu.tr)

## ABOUT US

---

**DESU** is a pioneering medical research and development company established in 2007, headquartered in Ankara, Turkey. Our mission is to advance healthcare technologies by developing innovative solutions, with a particular focus on neurosurgery and biomaterials.

Our headquarters are strategically positioned in a vibrant academic ecosystem, featuring highly regulated and meticulously detailed facilities. This environment fosters seamless collaboration between research and practical application, enabling groundbreaking advancements. Our facilities feature state-of-the-art cleanroom production environments, including 10,000-class and 1,000-class cleanrooms, designed to meet the stringent standards required for producing premium-quality medical devices and materials.

## FROM RESEARCH TO REALITY.

Innovation begins with curiosity—but its true impact is realized when groundbreaking research translates into real-world solutions. At **DESU**, we transform scientific advancements into tangible medical breakthroughs, bridging the gap between discovery and application.

Every product we create is the result of meticulous research, state-of-the-art technology, and an unwavering commitment to excellence. By integrating cutting-edge science with precision engineering, we ensure superior quality and performance in every solution we deliver.

With a relentless focus on progress, we don't just adapt to the future of healthcare—we shape it. By turning visionary research into reality, **DESU** is redefining what's possible in modern medicine and improving lives worldwide.

---

[www.desu.tr](http://www.desu.tr)

# WHY CHOOSE US?

## Our Approach

At **DESU**, we focus on understanding the precise needs of healthcare professionals and patients. Through cutting-edge innovation and scientific rigor, we develop solutions that meet the highest medical standards.

## We Understand Your Needs

At **DESU**, we carefully assess the unique challenges in healthcare to offer the most effective, evidence-based solutions. Our team is committed to addressing medical needs with precision and expertise.

## Our Quality Approach

At **DESU**, we uphold the highest standards of quality in every stage of our process. With a commitment to continuous improvement and compliance with global medical regulations, we ensure safe and effective healthcare solutions.



## Collagen Bone Graft Matrix

## XENOBONE® Bovine-Derived Graft: The Ultimate Bone Graft Solution for Dental Excellence

**XENOBONE®** is a high-performance, bioresorbable bone graft designed to support superior bone regeneration. Crafted from **Ultra-Pure Type-I Bovine Collagen**, it combines osteoconductive and osteoinductive properties to set a new standard in dental grafting.

## Why XENOBONE®?

### Unmatched Composition:

Made from **Ultra-Pure Type-I Bovine Collagen** for optimal bone regeneration and osteoblast support.

### Innovative Microporous Structure:

Ensures stability and seamless integration with natural bone.

### Osteoconductive & Osteoinductive:

Dual properties accelerate bone healing and regeneration.

### Sterile & Safe:

Individually sterilized vials ensure patient safety and minimize contamination risk.

### Convenient & Cost-Effective Packaging:

Available in 1cc, 2cc, 5cc, and 10cc sizes, with flexible, budget-friendly 5cc packs offering excellent value.

## Periodontal Defects

## Socket Preservation

## Sinus Lifts

## Bone Augmentation Defect Repair



**Elevate Your Practice with XENOBONE®**

XENOBONE® delivers consistent, reliable results across various dental procedures, offering both value and superior performance.

Available in 1cc, 2cc, 5cc, and 10cc sizes—check the table for specific volume options.

## XENOBONE®: The Ultimate Choice for Dental Bone Regeneration.

Product Code	Content
CLS12525	Collagen-Barrier Membrane 1.25x2.5 cm
CLS152	Collagen-Barrier Membrane 1.5x2 cm
CLS23	Collagen-Barrier Membrane 2x3 cm
CLS2525	Collagen-Barrier Membrane 2.5x2.5 cm
XBN-0715W-1CC	Collagen-Based Animal-Derived Bone Graft 0.7 - 1.5 mm, 1 cc Granule
XBN-0715W-2CC	Collagen-Based Animal-Derived Bone Graft 0.7 - 1.5 mm, 2 cc Granule
XBN-0715W-5CC	Collagen-Based Animal-Derived Bone Graft 0.7 - 1.5 mm, 5 cc Granule
XBN-0715W-10CC	Collagen-Based Animal-Derived Bone Graft 0.7 - 1.5 mm, 10 cc Granule
XBN-23W-1CC	Collagen-Based Animal-Derived Bone Graft 2-3 mm, 1 cc Granule
XBN-23W-2CC	Collagen-Based Animal-Derived Bone Graft 2-3 mm, 2 cc Granule
XBN-23W-5CC	Collagen-Based Animal-Derived Bone Graft 2-3 mm, 5 cc Granule
XBN-23W-10CC	Collagen-Based Animal-Derived Bone Graft 2-3 mm, 10 cc Granule
XBN-45W-1CC	Collagen-Based Animal-Derived Bone Graft 4-5 mm, 1 cc Granule
XBN-45W-2CC	Collagen-Based Animal-Derived Bone Graft 4-5 mm, 2 cc Granule
XBN-45W-5CC	Collagen-Based Animal-Derived Bone Graft 4-5 mm, 5 cc Granule
XBN-45W-10CC	Collagen-Based Animal-Derived Bone Graft 4-5 mm, 10 cc Granule
XBN-67W-1CC	Collagen-Based Animal-Derived Bone Graft 6-7 mm, 1 cc Granule
XBN-67W-2CC	Collagen-Based Animal-Derived Bone Graft 6-7 mm, 2 cc Granule
XBN-67W-5CC	Collagen-Based Animal-Derived Bone Graft 6-7 mm, 5 cc Granule
XBN-67W-10CC	Collagen-Based Animal-Derived Bone Graft 6-7 mm, 10 cc Granule

# COLL-OS<sup>®</sup>

Collagen Barrier Membrane



## Coll-os: The Future of Dental Regeneration

Enhance patient outcomes and elevate your practice with Coll-os your trusted partner in dental tissue regeneration.

Choose Coll-os: **The Ultimate Partner in Dental Regeneration.**

## Applications

- Periodontal Regeneration
- Socket Preservation
- Gingival Recession Treatment
- Bone Regeneration

### Bioresorbable Excellence

Naturally integrates without leaving residual material.

### Suture-Free Convenience

Can be used with or without sutures for flexibility.

## Coll-os: The Ultimate Solution for Dental Tissue Regeneration

**Coll-os Collagen Barrier Membrane** offers an advanced, highly effective solution for dental tissue regeneration. Made from over 95% pure Type-I bovine collagen, it mimics the natural extracellular matrix, ensuring seamless integration and superior healing.

## Why Coll-os?

### Superior Biocompatibility

High-purity collagen minimizes risks and enhances tissue integration.

### Enhanced Regeneration

Accelerates healing, supporting periodontal, socket, and gingival tissue restoration.

### Versatile Application

Dual-sided design adapts easily to various dental procedures.



# Clinical Cases

**1. Case** - Placement of an implant in the bone defect area after tooth extraction and grafting around the implant.



1



2



3



4



Before the implant



6 months later

**2. Case** - Sinus Prolapse in the Upper Left Jaw - Closed Sinus Lift Graft and Implant Application



1

Initial: 3mm crestal bone



2

Placement of an 8.5mm implant using the closed sinus lift technique



3

After 6 months: 8.5mm crestal bone (new bone formation of 5.5mm in length)



### 3. Case



1

Impacted tooth in the upper right jaw with extraction indication



2

Placement of graft and implant after the procedure

### 3. Case



1

Sinus prolapse and infected area due to edentulism in the upper right jaw



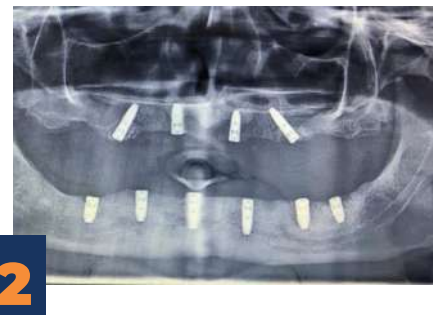
2

Open sinus lift and graft application followed by the placement of an 11.5mm implant, with a 3-month post-procedure image

### 5. Case - Large bone defects in the upper and lower jaw - Graft and implant application



1



2



3

New bone formation and osseointegrated implants after 6 months.

### 6. Case



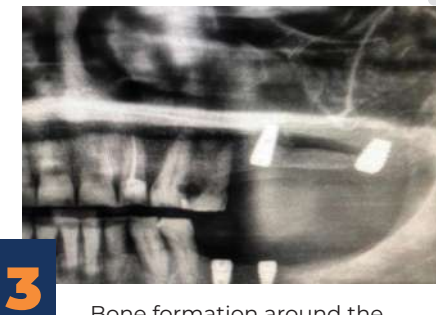
1

Edentulism and sinus prolapse in the upper left jaw



2

Placement of a 10mm implant with a closed sinus lift (graft materials are observed around the implant)



3

Bone formation around the implant after 6 months

# SHAPING THE FUTURE OF MEDICAL SOLUTIONS.



**XENOBONE<sup>®</sup>**  
Collagen Bone Graft Matrix

**COLL-OS<sup>®</sup>**  
Collagen Barrier Membrane

[www.desu.tr](http://www.desu.tr)



🏠 Üniversiteler Mah. 1596. Sok., Hacettepe Teknokent  
Safir Bina E Blok Z02-03, 06800 Çankaya/Ankara

☎ +90 **312 299 25 63**

🌐 [www.xenobone.com](http://www.xenobone.com)

🌐 [www.desu.tr](http://www.desu.tr)

